



# 2026

## PRODUCT CATALOG

[PrimeAttach.com](https://PrimeAttach.com)

### BUILT TO BE BADASS







# BUILT TO BE BADASS



(877) 757-5919 | [PrimeAttach.com](https://PrimeAttach.com)

See demos on







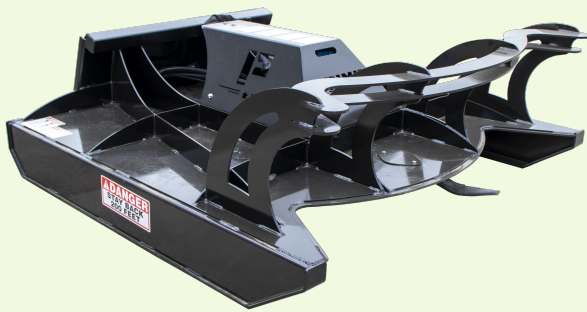
### BRUSH MOWER



**60" 72" + 80"**

- » Full-length 3/8" runners
- » 2 free-spinning blades
- » Rated for trees and saplings up to 3" in diameter
- » Standard hydraulic flow (15-25 gallons per minute)

### DIRECT DRIVE MOWER



**72" + 80"**

- » Rated for trees up to 8" diameter
- » Massive 417 lb round flywheel
- » 4 free-spinning blades
- » Standard hydraulic flow: 20-25 GPM
- » High-flow option available: 25-40 GPM

### TREE PULLER W/ PUSH BAR



- » 17" jaw opening
- » Cylinder cover
- » Remove trees up to 12" in diameter
- » 4 full-length gussets
- » Perfect for T-posts or fence posts
- » Bolt on screen option available

### POST DRIVER



- » PD750 Post Driver with Skid Loader Frame
- » 8" Dome Drive Tool - Fits 7" Post Diameter
- » Post Setting/Pulling Chain



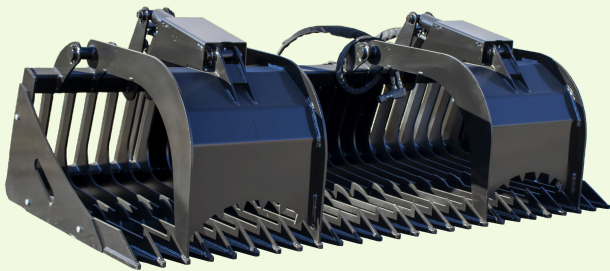




## STANDARD ROCK + BRUSH GRAPPLE

**62" 68" + 74"**

- » 32" Grapple opening
- » 1/4" tines, 3" spacing
- » Independent grapples
- » Bolt-on removable side plates
- » Light weight for tractors to smaller skid loaders
- » All grade 50 steel



## HEAVY-DUTY ROCK + BRUSH GRAPPLE

**62" 68" 74" 78" + 84"**

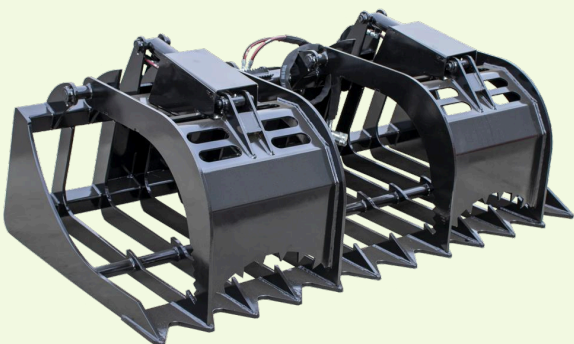
- » 39" Grapple opening
- » 3/8" tines, 3" spacing
- » Bolt-on removable side plates
- » Independent grapples
- » All grade 50 steel



## COMMERCIAL ROCK + BRUSH GRAPPLE

**68" 74" 78" + 84"**

- » 39" Grapple opening
- » 3/8" tines, 3" spacing
- » Grapple stops
- » Visibility cutouts
- » Bolt-on removable side plates
- » Reinforced outside tines
- » All grade 50 steel



## ROOT GRAPPLE

**68" 76" + 83"**

- » 39" Grapple opening
- » 1/2" Grade 50 tines with spacing 6,3"
- » Grapple stops
- » Visibility cutouts
- » Independent grapples
- » All grade 50 steel







## HD CLAM GRAPPLE

60" 68" + 74"

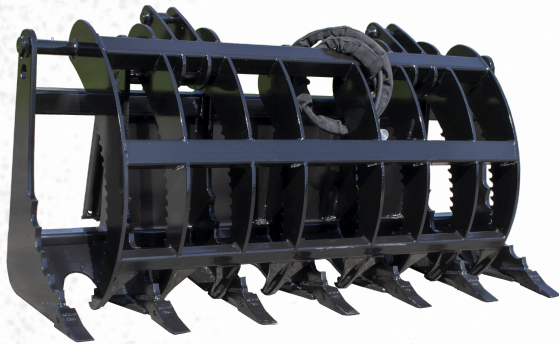
- » 51" Grapple Opening
- » 1/2" Grade 50 Tines
- » 3/8 grade 50 grapple
- » Grapple Stops
- » Replaceable teeth



## HD DUAL CLAM GRAPPLE

68"+74"

- » 51" Grapple Opening
- » 1/2" Grade 50 Tines
- » 3/8 grade 50 dual grapples
- » Independent Grapples
- » Grapple Stops
- » Replaceable teeth



## CLAM GRAPPLE

66" 74" + 86"

- » Massive 51" opening
- » 3/4" tines with replaceable digging teeth
- » Grapple stops
- » Single grapple
- » All grade 50 steel



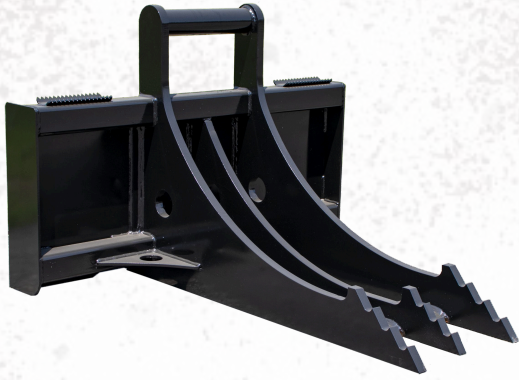
## DUAL CLAM GRAPPLE

66" 74" + 86"

- » Massive 51" opening
- » 3/4" tines with replaceable digging teeth
- » Grapple stops
- » Independent grapples
- » All grade 50 steel







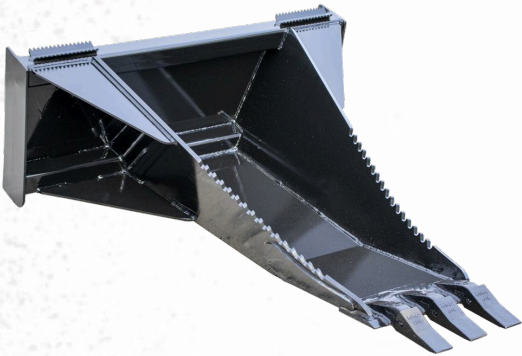
## ROCK + STUMP RIPPER

- » 1" Grade 50 tines (triple gusset design)
- » Recessed middle tine



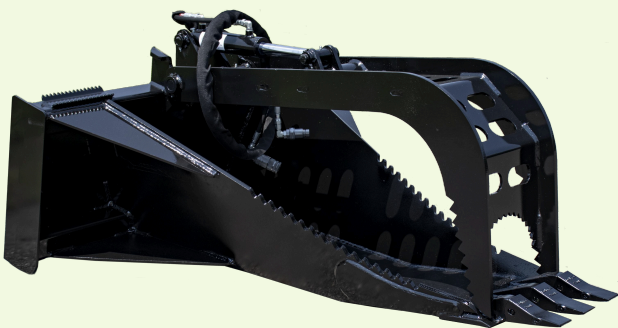
## ROCK + STUMP RIPPER GRAPPLE

- » 45" Grapple opening
- » 1" Grade 50 tines (triple gusset design)
- » 3/4" cutting edge gusset support for root extraction
- » Grapple stops



## STUMP BUCKET

- » Massive 63" length for longer digs
- » Replaceable digging/excavator performance teeth
- » 2 full-length wear strips on the bottom of bucket
- » All grade 50 steel

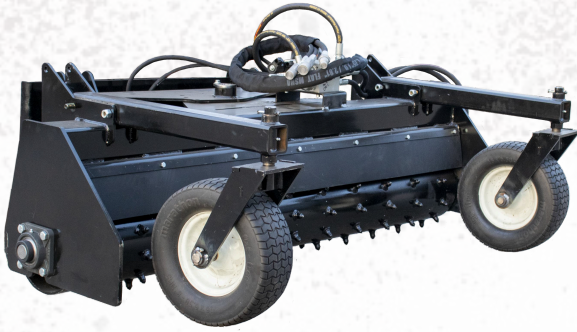


## STUMP BUCKET + GRAPPLE

- » Massive 53" grapple opening
- » Grapple stops
- » Replaceable digging/excavator performance teeth
- » 2 full-length wear strips on the bottom of bucket
- » All grade 50 steel







## SOIL CONDITIONER

**72" + 84"**

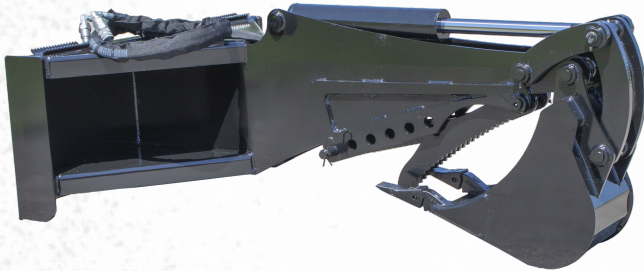
- » 10" rotating drum w/ welded carbide teeth
- » Bidirectional motor
- » Angles 25 degrees both directions
- » Manual option available
- » Floating quick attach plate



## TILLER

**72" + 84"**

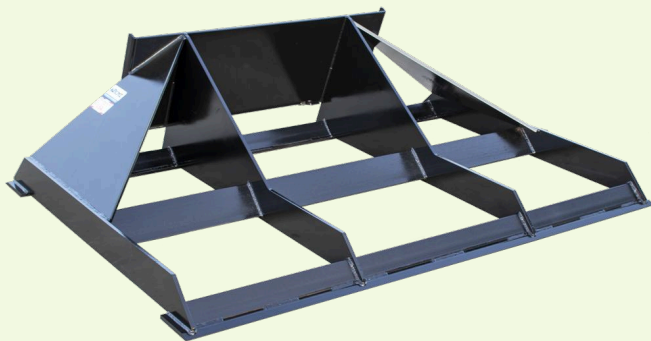
- » Four swing-away blades per spindle
- » Bi-directional motor / Bi-directional tine rotation
- » Standard hydraulic flow (15-25 gallons per minute)
- » Adjustable 6" tilling depth



## BACKHOE

**6-1/2' + 8-1/2'**  
w/ 12" bucket w/ 12" bucket

- » 1" Grade 50 steel gussets on pivot points
- » 6½' or 8½' Digging depth
- » 12", 18", and 24" wide bucket options with replaceable digging teeth
- » Mechanical thumb option available
- » Recessed cylinder protection



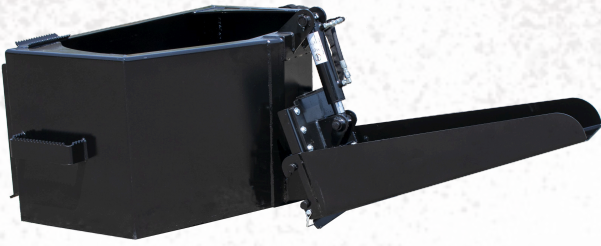
## LAND LEVELER

**72" 78" + 84"**

- » Use for back dragging, grading or sod peeling
- » Level and grade landscape
- » Multi-directional tool with cutting edge on front + back

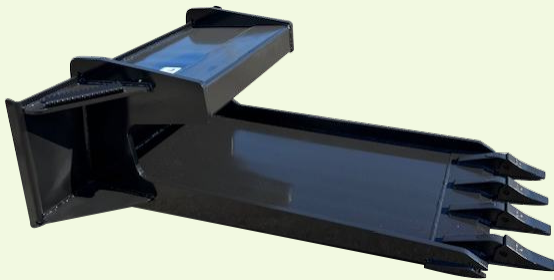






## CONCRETE HOPPER

- » 3/4 yard capacity
- » Pin-on extension
- » Hydraulic chute



## CONCRETE CLAW

- » 7-1/2" Claw Opening
- » 3/4" Grade 50 Sides
- » Replaceable teeth
- » 3/4" Cutting Edge



## TELESCOPIC BOOM

- » Operating weight: 485 lbs
- » Length fully extended: 22.73 ft
- » Rated fully extended: 350 lbs (horizontal)



## PICK UP BROOM

**72" + 84"**

- » 1/4" Grade 50 Bucket
- » 26" Poly bristles
- » 1/2" Bolt on reversable cutting edge
- » Adjustable height for bristle longevity







### AUGER

#### DRIVE

- » 2" hex drive unit
- » Self-centering frame
- » Planetary drive

### AUGER BITS

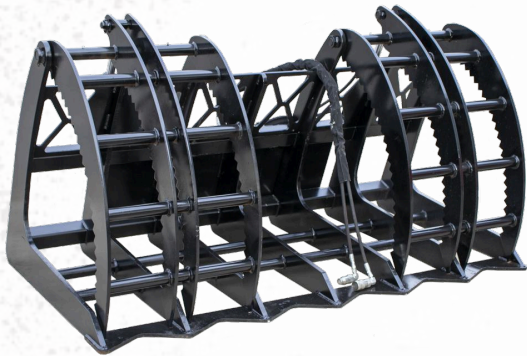
9"  
12"  
15"  
18"  
24"  
30"



### CYCLOPS SOLO GRAPPLE

48" + 54"

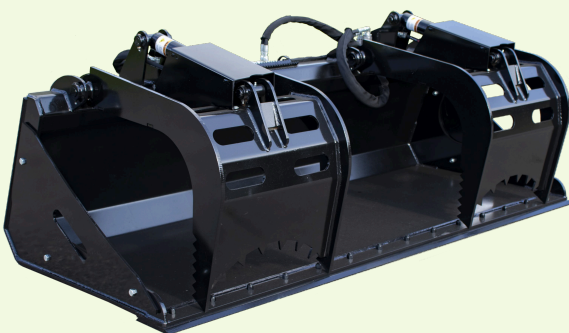
- » 39" Grapple opening
- » 3/8" tines, 3" spacing
- » Bolt-on removable side plates
- » Greasable pivot points
- » 1/2" serrated cutting edge
- » All grade 50 steel



### FORESTRY GRAPPLE

76" + 84"

- » Massive 52 1/2" grapple opening
- » 3/4" hardened tines with 12" tine spacing
- » Independent grapples
- » All grade 50 steel



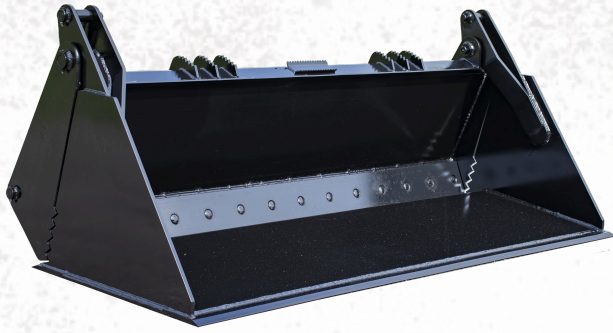
### DIRT BUCKET GRAPPLE

68" 72" 78" + 84"

- » 34" grapple opening
- » 1/4" Grade 50 bucket material
- » 1/2" bolt-on reversible cutting edge
- » Bolt-on side plates
- » Independent grapples
- » Optional bolt-on cutting edge



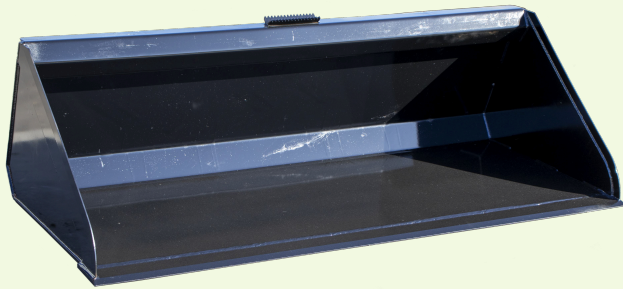




## 4-IN-1 BUCKET

**72" 78" + 84"**

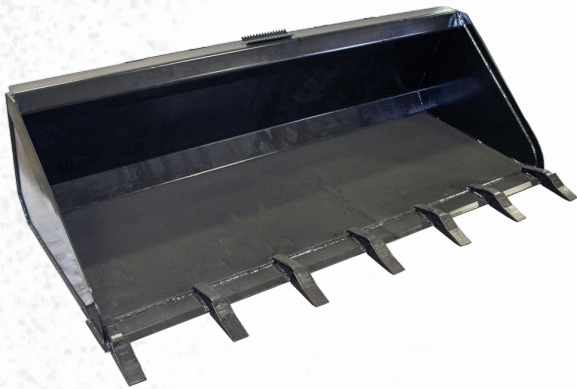
- » 3/4" bolt-on reversible cutting edge
- » Reinforced bucket and sides
- » Optional bolt-on reversible bucket cutting edge
- » Perfect for grappling, dumping, leveling & dozing



## SUPER DUTY LOW-PROFILE DIRT BUCKET

**62" 68" 72" 78" + 84"**

- » 22" high + 32" deep
- » 3/16" or 1/4" bucket material available
- » 3/4" fully welded on cutting edge
- » Optional bolt-on reversible cutting edge



## SUPER DUTY TOOTH BUCKET

**68" 72" 78" + 84"**

- » 1/4" Grade 50 bucket material
- » 3/4" fully welded-on cutting edge
- » Replaceable digging teeth
- » All Grade 50 steel



## ROCK BUCKET

**62" 68" 74" 78" + 84"**

- » 3/8" tines, 3" spacing
- » 1/2" serrated cutting edge
- » Bolt-on removable side plates
- » All grade 50 steel







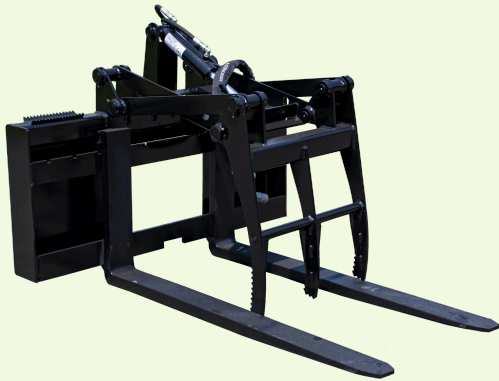
## PALLET FORKS

4'x4'

4'x5'

5'x4' + 5'x5'

- » Professionally milled 1 1/4" x 3" slider bars
- » 5,500 lb rated forks
- » Walk-through carriage



## PALLET FORK GRAPPLE

4'x4'

- » 58 3/4-inch Grapple Opening
- » Professionally milled 1 1/4 x 3 slide bar
- » All pivot points are greaseable
- » 5,500 lb rated



## HYDRAULIC SLIDING PALLET FORKS

4'x4'

4'x5'

5'x4' + 5'x5'

- » Smooth 1 1/4" x 3" slider bar
- » Hydraulic adjustable forks
- » 5,500 lb rated forks
- » Walk-through carriage



## LOG SPLITTER

Single Wedge + 4-Way

- » 5" Cylinder 30 Ton
- » 30" Stroke
- » Features 5/8" I-Beam







## HIGH CAPACITY GRAPPLE

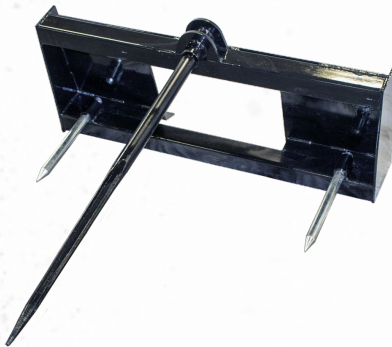
7' + 8'

- » 73" grapple opening
- » 5/16" thick steel side plates
- » 3/4" bolt-on reversible cutting edge
- » Additional teeth available



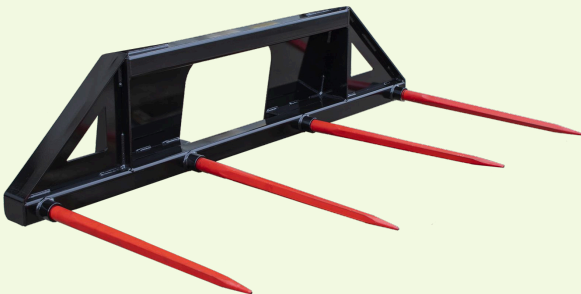
## 2 PRONG BALE SPEAR

- » (2) 49" spears
- » Used for square and round bales



## 3 PRONG BALE SPEAR

- » (2) 17" stabilizer spears
- » (1) 49" spear
- » Specialized for round bales



## 4 PRONG BALE SPEAR

- » (4) 39" spears
- » Used for square and round bales







## POWER SWEEPER

6' + 7'

- » 32" stainless or poly bristles
- » Standard flow up to 15-25 gpm
- » Hydraulic angle



## LOW PROFILE SNOW PRO

7' + 8'

- » Height 26" + depth 52"
- » 3/4" x 6" bolt-on reversible cutting edge
- » Internal gusset for support



## SNOW PUSHER

7' 8' + 10'

- » 3/4" Grade 50 shoes
- » 1/2" adjustable + reversible steel cutting edge
- » Optional back drag



## SNOW BLADE

6' 7' + 8'

- » 3/4" bolt-on reversible cutting edge
- » 30 degree angle hydraulic pivot
- » Easily adjustable skid shoe for depth control







### SNOW BUCKET

7' 8' 9' + 10'

- » 36" high and 42" deep
- » 3/4" bolt-on reversible cutting edge
- » High volume bucket capacity
- » Visibility cutouts



### SNOW BLOWER

72" 78" + 84"

- » 1/2" bolt-on reversible cutting edge
- » 2-stage blower
- » All hydraulic-driven motors
- » Angled paddles
- » Adjustable shoes
- » High flow available

## WE FINANCE

Prime Attachments has partnered with Synchrony Bank to provide your business with industry-leading construction equipment for a low monthly payment. Financing is quick and easy, getting you the equipment you need at an affordable monthly payment.

Get an instant approval today with no hard credit pull and no documents needed.



**Every purchase comes with a two-year manufacturer warranty.**







## QUICK ATTACH PLATE

1/4" + 5/16"

- » 1/4" or 5/16" thick plate
- » Solid or open available
- » Grade 50 steel



## RECEIVER HITCH

- » 2" receiver tube, 12" long
- » Quick attach plate thickness
- » Grade 50 steel



## QUICK HITCH

- » 3 positions for adequate height
- » Carrying handles for chain hookups
- » Light weight to handle with one hand
- » Small and compact to not take up room in pickup box
- » Grade 50 steel







**TO ORDER**

4243 County Rd 40 NW  
Garfield, MN 56332

877-757-5919  
Or  
[PrimeAttach.com](http://PrimeAttach.com)

